



Explanation of how to connect an electric masturbator

by Eヤツ(Eyatu_VRC)

1. What you need

- Bluetooth adapter (4.0 or higher)

To connect your electric masturbator to your PC via Bluetooth.

- Electric masturbator

(Compatible with electric masturbators that are "Buttplug compatible" and "piston-type."

Only "The Handy" has been tested. (<https://thehandy.tech/>)

For other compatibility and operation reports, try searching the web using the tags "#Vtφに" or "buttplug compatible.")

2. Overall work flow

1. Install "Intiface Central"

2. Connect an electric masturbator to your PC - Using The Handy as an example -

3. Actually link the game and electric masturbator

"What's 'Intiface Central'? I've never heard of this software..." If you're wondering, don't worry! Let's move on!

3. Explanation

① Install "Intiface Central"

The source code is available on GitHub (MIT License),
so download it here:

<https://github.com/intiface/intiface-central/releases>

Click the arrow next to "Assets" to open it and select
"intiface-central-""v2.6.8(latest version)""-win-x64.exe"

Once downloaded, launch the exe to begin the installation.

Intiface Central v2.6.8 Latest

Features

- Added Device Support
 - Kiiroo Keon Wifi
 - Luxus (Kiiroo)
 - ToyCod Clara
 - VVD Vkini
 - Adorime Wearable Egg Vibrator
 - Adorime Male Masturbator
 - Adorime Penis Vibrator
 - Adorime Anal Vibrator
 - Adorime Chastity Cage
 - Adorime G-spot Rabbit Dildo Vibrator
 - Adorime Backy
 - Galaku Cannon-GT (alt ID)
 - Qingnan [#16](#)
 - JoyHub Enam
 - JoyHub Viv
 - JoyHub Vivara
 - JoyHub Explorer 2
 - JoyHub Peachy
 - JoyHub Vigo
 - JoyHub Pipes

Assets 7

intiface-central-v2.6.8-macos-universal.zip

sha256:d26b0a248b50c456...

75.9 MB

last month

intiface-central-v2.6.8-win-x64.exe

sha256:ae4cb9d166558676...

14.4 MB

last month

intiface_central_v2.6.8-android.apk

sha256:ee21c42227b7b301...

79.3 MB

last month

intiface_central_v2.6.8-linux-ubuntu-22.04-x64.zip

sha256:d673583ac9f55fc3...

18.4 MB

last month

intiface_central_v2.6.8-linux-ubuntu-24.04-x64.zip

sha256:52dabd40330c17d2...

18.3 MB

last month

Source code (zip)

last month

Source code (tar.gz)

last month

Download the latest releases

3. Explanation (continued)

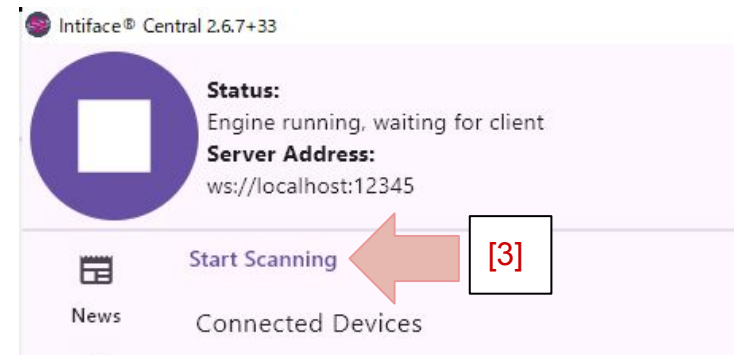
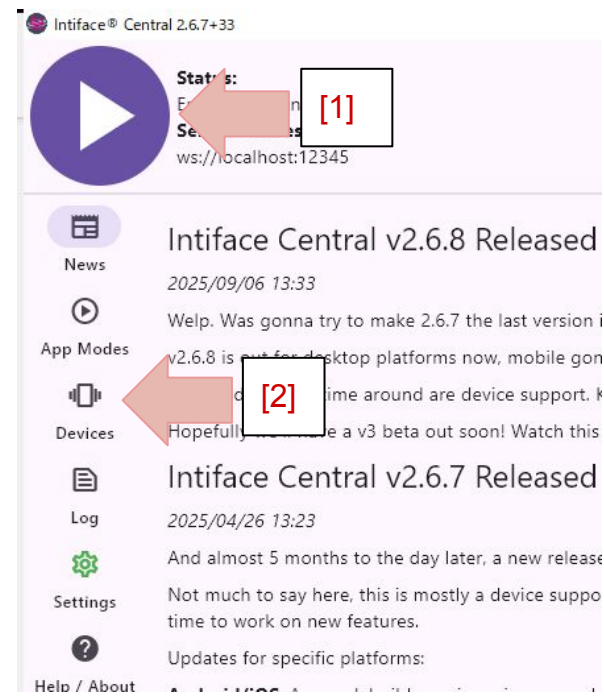
- First, launch "Intiface Central"!

Once launched, follow the screen as you proceed with the connection process.

- [1] Press the button in the upper left.
- [2] Click the "Devices" tab, which is the third tab from the top left.
- [3] Click the "Start Scanning" button in the upper left.

It's now searching for devices, so

leave "Intiface Central" in this state for now.



3. Explanation (continued)

② Connecting an Electric Masturbator to a PC - Using The Handy as an Example

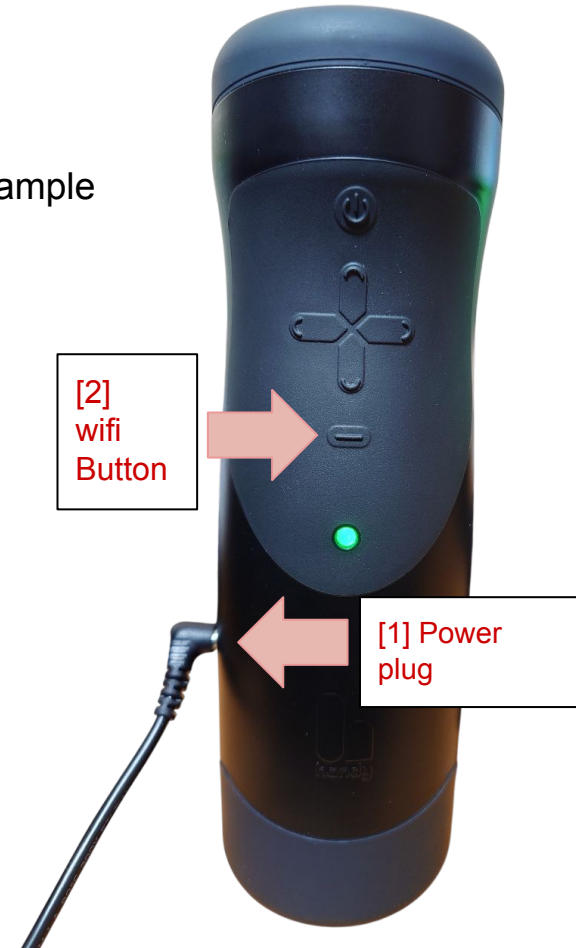
Next, we'll move on to the process of connecting an electric masturbator.

- [1] Plug the power cord into The Handy.
The LED will turn green.

*Please note that The Handy must be plugged in at all times! (Important)

Try your best to hold it in your hand or place it in a comfortable position!

- [2] Press and hold the Wi-Fi button on The Handy until the LED turns blue.
You'll now be able to connect via Bluetooth.



3. Explanation (continued)

•[3] If the device name appears in "Intiface Central," the connection between "Intiface Central" and the electric masturbator is successful.



The device name appeared!

•[4] You can test the connection with the electric masturbator by pressing the "Toggle Oscillation" button on "Intiface Central." Pressing it again will stop the oscillation.



[4]

3. Explanation (continued)

③ Actually linking the game and the electric masturbator

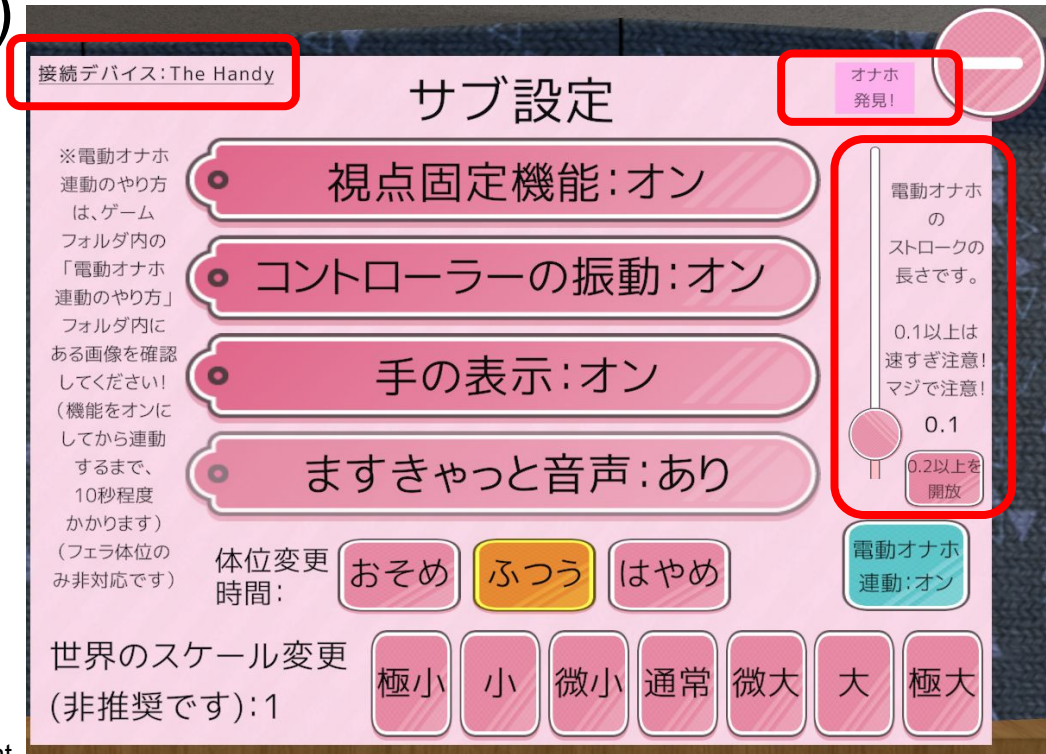
[1] Launch the VR erotic game,

Go to "Sub Settings" and click

the "Electric Masturbator Link" button in the bottom right.

Wait about 10 seconds after clicking the button.

- "Connected Device" will be displayed in the upper left,
- "Masturbator Connection Status" in the upper right,
- "Electric Masturbator Stroke Length" will be displayed on the right.

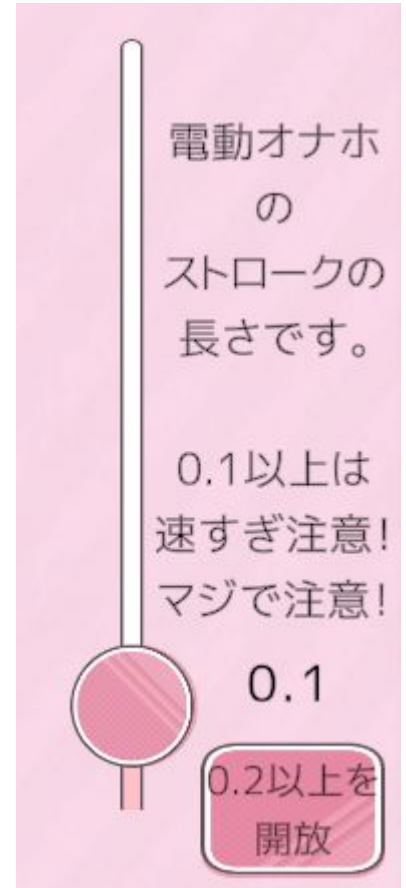


3. Explanation (continued)

The "Electric Masturbator Stroke Length" on the right allows you to adjust the stroke length of the electric masturbator.

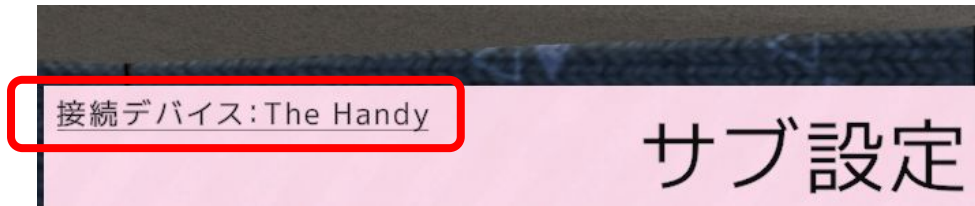
To prevent sudden high-speed piston movements that put strain on your penis, the stroke length is initially locked so that it does not exceed 0.2.

If you want longer strokes, click the button to unlock it.



3. Explanation (continued)

[2] If the connected device is displayed in the upper left corner, the connection is successful, Click "Start Sex" to check if the pistons are linked.



If the pistons are linked, the connection was successful! Enjoy!

4. If it doesn't work...

- If you're having trouble connecting your electric masturbator to "Intiface Central," please quickly try the following steps again:
"Start Connection" in "Intiface Central" → Connect your electric masturbator via Bluetooth.
- Connect your electric masturbator to "Intiface Central" via Bluetooth → Launch your VR erotic game.
- If it still doesn't work after trying the above, please check out the website in "5. References."
- If you have any information about whether it worked, didn't work, or how you fixed it, we'd appreciate it if you could share it with us using the "#VrΦIc" tag on social media or the in-game contact form!

5. Reference materials

- Ada Labo

<https://adult-vr072.net/adult-vr-nyumon/vr-app/buttplug-intiface-central/>

This article provides a very detailed explanation of how to set up "Intiface Central," and also explains many other ways to use it with an electric masturbator.

Highly recommended!!

- Itozamit

<https://ci-en.dlsite.com/creator/24209/article/1361124>

This article explains how to set up "Intiface Central."

In the comments section, people are sharing information,

such as what to do if you can't connect with "The Handy," so I recommend checking it out if you're having trouble!

- Intiface Central Official Website

<https://docs.intiface.com/docs/intiface-central/brands/thehandy>

This page lists compatible devices for Intiface Central and explains how to switch each device into Bluetooth mode.

This might be helpful for those who own an electric masturbator other than The Handy!